



Remote Security Locker with Asset

RSL10105xx

The Remote Security Locker with asset provides a secure, monitored asset position located in a locking box that can be mounted on a wall or other suitable structure.

Controlled and monitored by an existing access control system or SAM, the locking cabinet securely stores a single asset and includes sensors that provide indication of door state and asset presence. When access to the asset is desired, the system is used to unlock the cabinet.

Theory of Operation:

This solution enables remote monitoring and control over a single asset with room for large key sets and other items if desired. It fits a wide variety of applications including emergency access and control, on location, for convenience.

KEY PRODUCT FEATURES

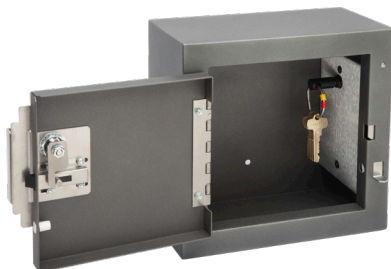
- Direct entrapment available.
- Can connect to access control system, fire panel, SAM, or any device with remotely-operated relay that can provide sufficient power.
- Mechanical release after unlocking ensures door remains closed until user is ready to access interior.
- Time out period after unlock/access granted.
 - Unit locks again if unopened for time out period.
- Door sensor for remote indication of cover open/closed.
- Asset presence sensor for remote indication of asset in/out.
- LED illuminates to indicate when unlocked/access granted.
- Mechanical key override for asset access should power fail.
- No external fasteners to reduce risk of tampering.
- Wall Mount.
- Dead latch to prevent door tampering.

Door Types

- Cam Lock
- Interchangeable core^A

Asset Types

- Cam Lock
- Interchangeable core^A
- KSI Plug (Fob)



^A Most major manufacturer's types available.

TECHNICAL SPECIFICATIONS

Dimensions:

Exterior

Width: 10"

Height: 10"

Depth: 5"

Interior

Width: 8.8"

Height: 9.8"

Depth: 4.10"

Door Opening

Width: 7.5"

Height: 7.630"

Material:

16 Gauge powder coated steel

Power:

From external source

Connectivity:

- LED +5 VDC^B standard
- Door solenoid 12 VDC^B standard.
- Door sensor - contact closure
- Asset sensor - contact closure

^B can be resisted to match available low voltage